

Universal Position Control Unit

PS 90+

9013.0015 / 30.07.2020

Included Items:

- Control unit
- Power cable 2.5 m long
- USB cable 2 m long
- Jump plug for emergency-stop button
- Acceptance certificate



The following accessories are available:

- Connecting cable with plugs for different positioning systems
- Analog joystick for 3 axes with 3 m cable
- Emergency-stop button with 3 m cable
- up to 4 outputs for motor holding brakes
- Anybus® interface (Modbus/TCP)

**This short manual does not replace the user manual.
It is only an additional instruction for qualified personnel.**

You can download the complete manual and the OWISoft on the OWIS website.

Before Setup:

- Verify that all listed parts are included in the delivered package.
- Follow the safety instructions contained in the user manual.

Initial Operation

The initial operation consists of:

- ▶ **Hardware** part
- ▶ **Software** part:
 - Driver installation
 - Start-up via the PC (OWISoft)
 - Start-up via the PC (User's Application Software)

Hardware start-up

PREPARING CONTROL:

! Note:

- Plugs and cables must not be connected or disconnected while powered.

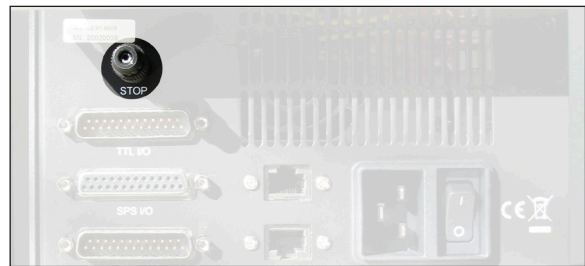
Before switching on and starting the control all peripheral devices have to be connected. Otherwise they will not be identified and initialized by the control unit.

A minimum distance of 15 cm to closed surfaces and walls must be maintained to avoid heat accumulation in the control or at the heat sink.

- 1) Either the shorting plug (delivered as standard) or the emergency-stop button (optional accessories) has to be connected.

! Note:

- If the junction is not connected, the function for the motor power stage is blocked.



- 2) Connect the positioning unit(s) and any further linear measuring systems (optional accessories) to the preconfigured axis/axes.

! Note:

- The configuration for the axes can be seen in the acceptance certification.
(For the PS90 only one motor type is defined per axis module.)



- 3) Die Stromversorgung der Steuerung anschließen.

CONNECTING CONTROL:

Connect the control with the computer and/or hand-held terminal (optional accessories), as well as the joystick (optional accessories).

4) The connection to the computer can be made either by:

- a) Direct connection via RS232 or USB cable.
 - with the RS232 interface the communication is possible immediately.
 - for the USB interface a driver installation has to be done first.
 - For the ethernet interface a configuration is needed. This can be done connecting the control unit using USB or RS232.

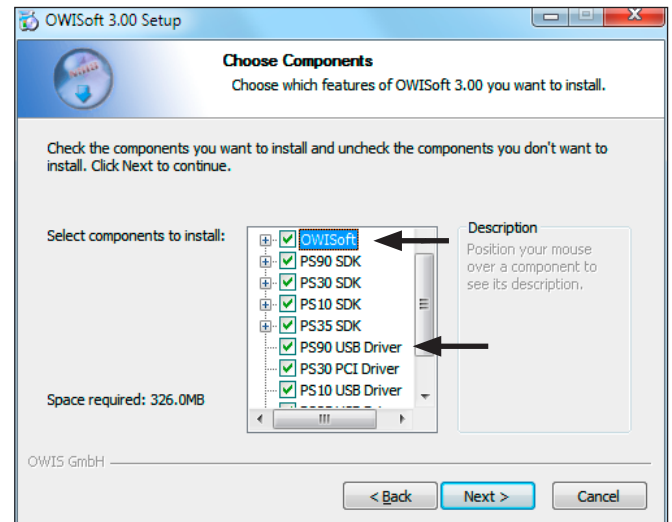


- b) Indirect connection via Ethernet cable, Anybus® module (optional accessories, Modbus/TCP, necessary). An Anybus module configuration is necessary for the network interface. You can set TCP/IP network settings of a module (Modbus/TCP) with a software tool (..\OWISoft\Application\system\PS 90 IPconfig.exe). The selected IP address should be accessible on the Ethernet.

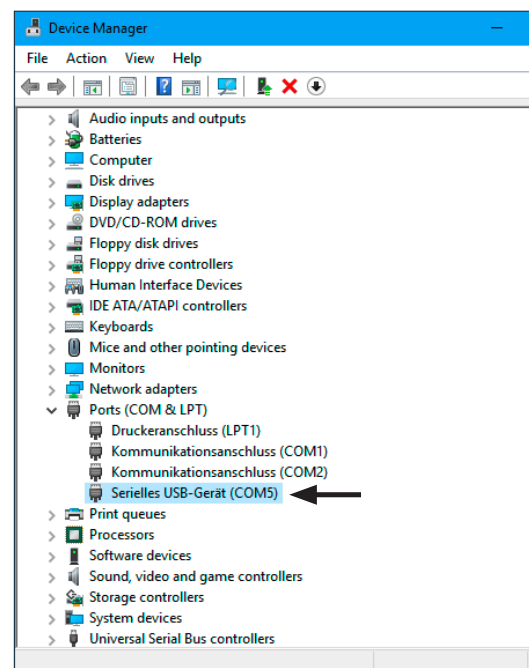
Software start-up

Start-up with the computer:

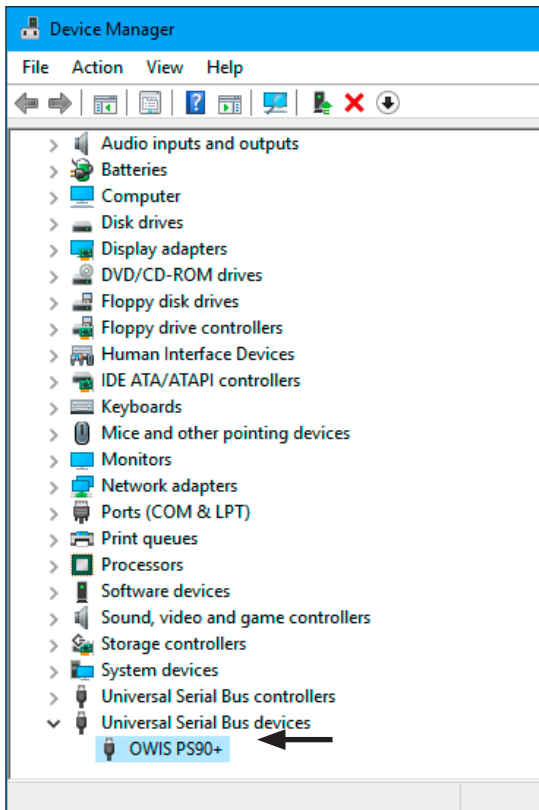
- 5) Power the control, start the computer and install software and drivers as follows.
 - Supported operating systems: Windows XP, Windows Vista (32/64 bit), Windows 7 (32/64 bit), Windows 8.x (32/64 bit), Windows 10 (32/64 bit)
 - During installation administrator authorisation is required.
 - For the installation please start "setup.exe".
 - Enter the necessary user data (username and company - any entry) and the password (delivered).



- Select "PS90 SDK".
- Select the "PS90 USB Driver" during the installation. All necessary files will be installed into the folder ("..\OWISoft\ps90\usb_driver"). Afterwards, the driver will be installed automatically.
- Restart the computer after installation.
- During the installation of the USB driver a virtual serial interface is created. It behaves like a normal serial interface (COM port).



- or WinUSB driver:



Start-up using OWISoft

A short manual for the configuration via OWISoft has been included separately.

Start-up using user's application software

If the control shall be used by a user's own software, a precise knowledge of the control is essential.

Please read the manual for the control carefully.

There, you will also find a chapter "Instructions Concerning the Setup of User Application Software", as well as the command table for the PS 90.