

Universal Position Control Card

PS 30

9013.0189 / 03.11.2020

Included Items:

- PCI plug-in card
- Output stage module in the required motor configuration
- 3 flat ribbon cables 50-pin for the connection of the PCI plug-in card and the output stage module
- 3-way motor adapter cable 0.65 m long
- Acceptance certificate



The following accessories are available:

- External desktop power supply (100-240 V, 90 W)
- Connecting cable with plug for different positioning systems
- Analog joystick for 3 axes with 3 m cable
- Stand-alone compiler with USB dongle
- Position measuring system connector for 3 axes (counter board)
- Connection for an additional position measuring system/encoder

**This short manual does not replace the user manual.
It is only an additional instruction for qualified personnel.**

You can download the complete manual and the OWISoft on the OWIS website.

Before Setup:

- Verify that all listed parts are included in the delivered package.
- Follow the safety instructions contained in the user manual.

Initial Operation

The initial operation consists of:

- ▶ **Hardware** part
- ▶ **Software** part:
 - Driver installation
 - Start-up via the PC (OWISoft)
 - Start-up via the PC (User's Application Software)

Hardware start-up

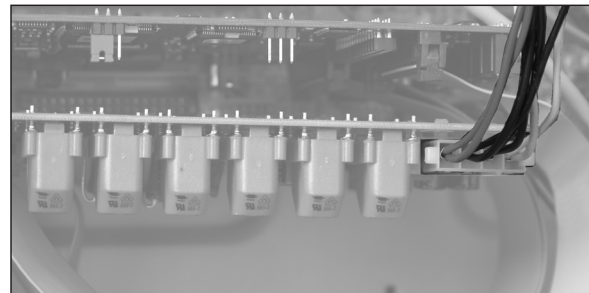
PREPARING CONTROL:

! Note:

- Plugs and cables must not be connected or disconnected while powered.

Before switching on and starting the control all peripheral devices have to be connected. Otherwise they will not be identified and initialized by the control unit.

- 1) The PCI plug-in card is installed in a free PCI slot of the computer. The output stage module is connected with the plug-in card (3 flat ribbon cables) and mounted into another slot.
- 2) The power supply of the output stage is connected either



internally (12V)



or externally (24V).

- 3) Connect the positioning unit(s) and any further linear measuring systems (optional accessories) to the preconfigured axes.

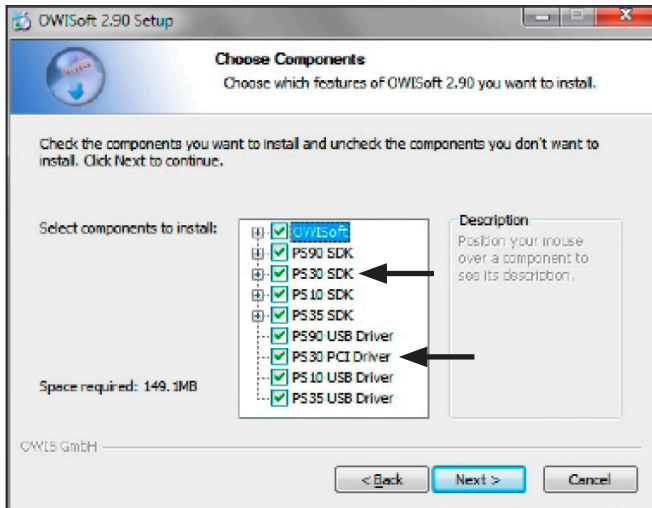


! Note:

- The configuration for the axes can be seen in the acceptance certification.

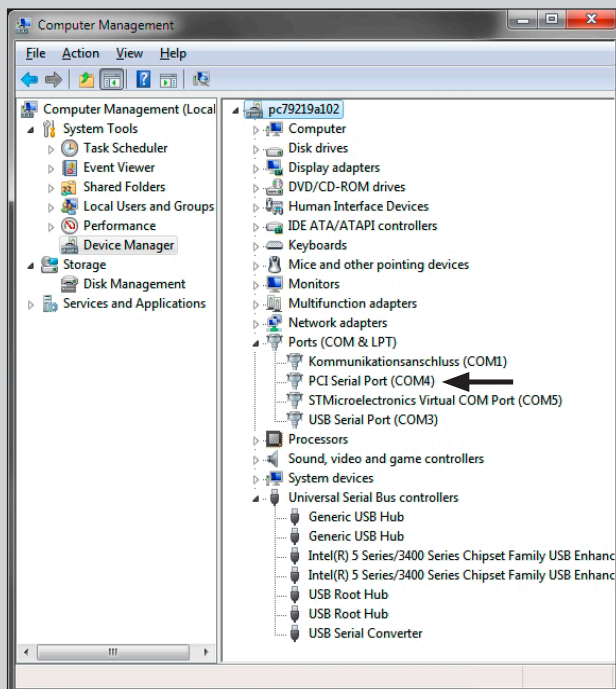
Software start-up (PC)

- 4) Start the computer, install software and drivers as follows.
Supported operating systems: Windows XP, Windows Vista (32/64 bit), Windows 7 (32/64 bit), Windows 8 (32/64 bit), Windows 8.1 (32/64 bit) and Windows 10 (32/64 bit).
During installation administrator authorisation is required.
- For the installation please start "setup.exe".
 - Enter the necessary user data (username and company - any entry) and the password (delivered).



- Select the "PS30 SDK".
- Select the "PS30 PCI Driver" during the installation.
All necessary files will be installed into the folder ("..\OWISoft\ps30\pci_driver").
Afterwards, the driver will be installed automatically.
- Restart the computer after installation.

- During the installation of the PCI driver a virtual serial interface is created. It behaves like a normal serial interface (COM port).



- Further details for the driver installation can be found at: "[..\OWISoft\ps30\pci_driver](#)".

Start-up using OWISoft

A short manual for the configuration via OWISoft has been included separately.

Start-up using user's application software

If the control shall be used by a user's own software, a precise knowledge of the control is essential.

Please read the manual for the control carefully.

There, you will also find a chapter "Instructions Concerning the Setup of User Application Software", as well as the command table for the PS 30.

